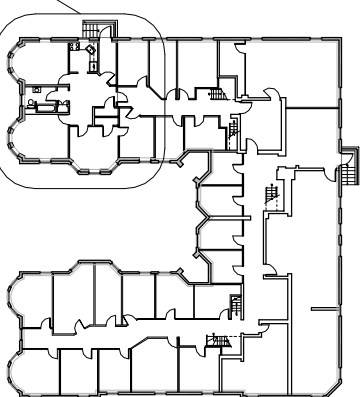


I CERTIFY TO THE BEST OF MY KNOWLEDGE, INFORMATION AND BELIEF THAT THIS PLAN FULLY AND ACCURATELY DEPICTS UNIT 59-B, THE LAYOUT OF THE UNIT, ITS LOCATION, DIMENSIONS, APPROXIMATE AREA, MAIN ENTRANCE AND IMMEDIATE COMMON AREA TO WHICH IT HAS ACCESS, AS BUILT

AREA OF ENLARGED PLAN



KEY PLAN

SCALE: 1" = 50'-0"

BASEMENT PLAN (UNIT 59-B)

SCALE: 1/8" = 1'-0"

CRAMER & LEVINE
ARCHITECTS P.A.C.T.S.
134 EAST MAIN STREET
TEL (508) 230-2466

NORTON, MA 02766
FAX (774) 265-1811

PROJECT:

**57-59 MAGAZINE STREET
CONDOMINIUM**
57-59 MAGAZINE STREET
CAMBRIDGE, MA 02139

DRAWN BY:

tm

NUMBER:

B1

JOB # 04-072

DATE: 1/3/06

CAD FILE: